

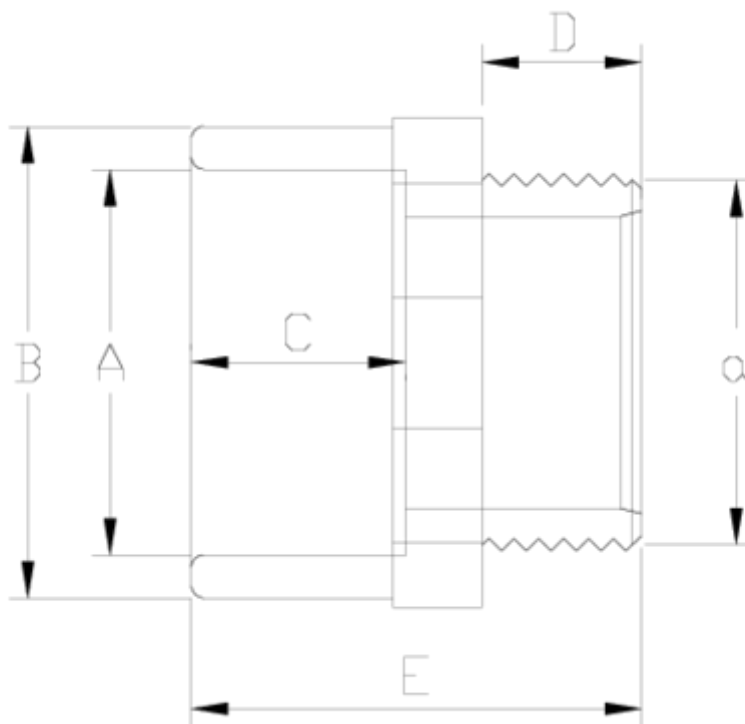


Accesorios de presión encolar & mixtos PVC-U

Terminal R/Macho ITEM 019

Ref.	Descripción	P.Neto	Vol. (m ³)	P.Bruto	Lote
1002000	TERMINAL R/MACHO 16-3/8"	0.007	0.00473	1.17	150
1002001	TERMINAL R/MACHO 20-1/2"	0.015	0.00472	1.64	100
1002002	TERMINAL R/MACHO 25-3/4"	0.026	0.00892	2.80	100
1002003	TERMINAL R/MACHO 32-1"	0.037	0.00891	3.18	80
1002004	TERMINAL R/MACHO 40-1 1/4"	0.065	0.01553	4.87	70
1002005	TERMINAL R/MACHO 50-1 1/2"	0.111	0.02244	7.15	60
1002006	TERMINAL R/MACHO 63-2"	0.158	0.04717	14.90	90
1002950	TERMINAL R/MACHO 63-2" LARGO	0.173	0.04717	9.30	50
1002007	TERMINAL R/MACHO 75-2 1/2"	0.272	0.04717	12.90	45
1002951	TERMINAL R/MACHO 75-2 1/2" LARGO	0.295	0.04717	13.91	45
1002008	TERMINAL R/MACHO 90-3"	0.413	0.03682	10.88	25
1002009	TERMINAL R/MACHO 110-4"	0.561	0.04117	9.62	16





ITEM 019 | Terminal R/Macho

Codigo	A-a	Peso (g)	B	C	D	E	PN	ROSCA
02000	16-3/8"	10	22	14	11	32	PN10	BSP
02001	20-1/2"	15	27	16	14	38	PN10	BSP
02002	25-3/4"	24	33	19	16	51	PN10	BSP
02003	32-1"	41	41	22	19	52	PN10	BSP
02004	40-1 1/4"	46	50	26	21	56	PN10	BSP
02005	50-1 1/2"	107	63	31	22	67	PN10	BSP
02006	63-2"	137	76	38	26	73	PN10	BSP
02950	63-2" L	141	76	38	38	85	PN10	BSP
02007	75-2 1/2"	212	90	44	30	87	PN10	BSP
02951	75-2 1/2" L	219	90	44	42	99	PN10	BSP



ITEM 019 | Terminal R/Macho

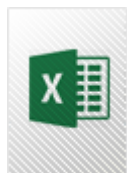
02008	90-3"	332	108	51	33	96	PN10	BSP
02009	110-4"	549	131	61	38	127	PN10	BSP



DOCUMENTACIÓN DE PRODUCTO



FAMILIA
TÉCNICA



CERTIFICADOS DE PRODUCTO

CERTIFICADOS DE EMPRESA

