

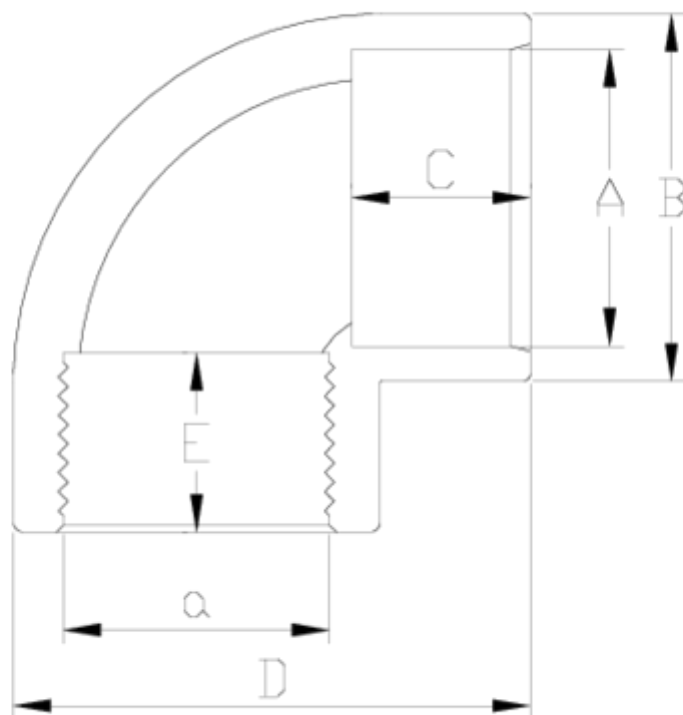


## Accesorios de presión encolar & mixtos PVC-U

### Codo 90° Encolar/R-H ITEM 004

| Ref.    | Descripción                    | P.Neto | Vol. (m <sup>3</sup> ) | P.Bruto | Lote |
|---------|--------------------------------|--------|------------------------|---------|------|
| 1002201 | CODO 90° ENCOLAR-R/H 20-1/2"   | 0.022  | 0.00892                | 2.36    | 100  |
| 1002202 | CODO 90° ENCOLAR-R/H 25-3/4"   | 0.033  | 0.00892                | 3.50    | 100  |
| 1002203 | CODO 90° ENCOLAR-R/H 32-1"     | 0.065  | 0.02244                | 6.97    | 100  |
| 1002204 | CODO 90° ENCOLAR-R/H 40-1 1/4" | 0.125  | 0.03129                | 13.03   | 100  |
| 1002205 | CODO 90° ENCOLAR-R/H 50-1 1/2" | 0.161  | 0.04879                | 16.66   | 100  |
| 1002206 | CODO 90° ENCOLAR-R/H 63-2"     | 0.286  | 0.04879                | 14.96   | 50   |
| 1002260 | CODO 90° ENCOLAR-R/H 75-1 1/2" | 0.594  | 0.03129                | 12.46   | 20   |
| 1002261 | CODO 90° ENCOLAR-R/H 75-2"     | 0.572  | 0.03129                | 12.02   | 20   |
| 1002207 | CODO 90° ENCOLAR-R/H 75-2 1/2" | 0.452  | 0.04880                | 14.15   | 30   |
| 1002262 | CODO 90° ENCOLAR-R/H 90-2"     | 1.074  | 0.03680                | 13.44   | 12   |
| 1002263 | CODO 90° ENCOLAR-R/H 90-2 1/2" | 0.995  | 0.03680                | 12.56   | 12   |
| 1002208 | CODO 90° ENCOLAR-R/H 90-3"     | 0.849  | 0.04836                | 15.96   | 18   |





## ITEM 004 | Codo 90° Encolar/R-H

| Código | A-a       | Peso (g) | B   | C  | D   | E  | PN   | ROSCA |
|--------|-----------|----------|-----|----|-----|----|------|-------|
| 02201  | 20-1/2"   | 21       | 27  | 16 | 41  | 16 | PN10 | BSP   |
| 02202  | 25-3/4"   | 34       | 33  | 19 | 50  | 17 | PN10 | BSP   |
| 02203  | 32-1"     | 66       | 41  | 22 | 61  | 21 | PN10 | BSP   |
| 02204  | 40-1 1/4" | 120      | 50  | 26 | 74  | 23 | PN10 | BSP   |
| 02205  | 50-1 1/2" | 145      | 61  | 31 | 88  | 24 | PN10 | BSP   |
| 02206  | 63-2"     | 275      | 75  | 38 | 109 | 28 | PN10 | BSP   |
| 02260  | 75-1 1/2" | 589      | 89  | 44 | 129 | 24 | PN10 | BSP   |
| 02261  | 75-2"     | 562      | 89  | 44 | 129 | 28 | PN10 | BSP   |
| 02207  | 75-2 1/2" | 427      | 89  | 44 | 129 | 32 | PN10 | BSP   |
| 02262  | 90-2"     | 1040     | 108 | 51 | 156 | 28 | PN10 | BSP   |



## ITEM 004 | Codo 90° Encolar/R-H

|       |           |     |     |    |     |    |             |     |
|-------|-----------|-----|-----|----|-----|----|-------------|-----|
| 02263 | 90-2 1/2" | 995 | 108 | 51 | 156 | 32 | <b>PN10</b> | BSP |
| 02208 | 90-3"     | 831 | 108 | 51 | 156 | 35 | <b>PN10</b> | BSP |



## DOCUMENTACIÓN DE PRODUCTO



FAMILIA  
TÉCNICA



## CERTIFICADOS DE PRODUCTO

## CERTIFICADOS DE EMPRESA

