



Collarines toma

Collarín toma simple 4 tornillos ITEM 126

Ref.	Descripción	P.Neto	Vol. (m ³)	P.Bruto	Lote
1003143	COLLARIN TOMA SIMPLE 50-1 1/4"	0.268	0.03682	12.56	45
1003011	COLLARIN TOMA SIMPLE 63-1/2"	0.237	0.04117	14.87	60
1003012	COLLARIN TOMA SIMPLE 63-3/4"	0.234	0.04879	14.63	60
1003013	COLLARIN TOMA SIMPLE 63-1"	0.245	0.04879	15.25	60
1003014	COLLARIN TOMA SIMPLE 63-1 1/4"	0.254	0.06347	16.28	60
1003015	COLLARIN TOMA SIMPLE 63-1 1/2"	0.254	0.06347	16.30	60
1003016	COLLARIN TOMA SIMPLE 75-1/2"	0.301	0.04117	11.55	35
1003017	COLLARIN TOMA SIMPLE 75-3/4"	0.301	0.04460	11.56	35
1003018	COLLARIN TOMA SIMPLE 75-1"	0.309	0.04460	11.81	35
1003019	COLLARIN TOMA SIMPLE 75-1 1/4"	0.324	0.04460	12.34	35
1003020	COLLARIN TOMA SIMPLE 75-1 1/2"	0.334	0.06347	12.75	35
1003021	COLLARIN TOMA SIMPLE 75-2"	0.370	0.04879	13.53	35
1003022	COLLARIN TOMA SIMPLE 90-1/2"	0.343	0.04117	11.25	30
1003023	COLLARIN TOMA SIMPLE 90-3/4"	0.348	0.04117	11.40	30
1003024	COLLARIN TOMA SIMPLE 90-1"	0.358	0.06347	11.70	30
1003025	COLLARIN TOMA SIMPLE 90-1 1/4"	0.371	0.04460	12.09	30
1003026	COLLARIN TOMA SIMPLE 90-1 1/2"	0.369	0.06347	12.10	30
1003027	COLLARIN TOMA SIMPLE 90-2"	0.416	0.06150	13.41	30
1003115	COLLARIN TOMA SIMPLE 110-1/2"	0.471	0.06150	12.99	25
1003028	COLLARIN TOMA SIMPLE 110-3/4"	0.469	0.06150	12.94	25
1003029	COLLARIN TOMA SIMPLE 110-1"	0.475	0.06150	13.09	25
1003030	COLLARIN TOMA SIMPLE 110-1 1/4"	0.487	0.06347	13.40	25



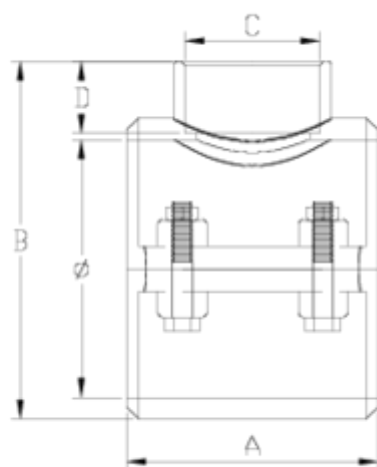


Collarines toma

Collarín toma simple 4 tornillos ITEM 126

Ref.	Descripción	P.Neto	Vol. (m ³)	P.Bruto	Lote
1003031	COLLARIN TOMA SIMPLE 110-1 1/2	0.499	0.06347	13.68	25
1003032	COLLARIN TOMA SIMPLE 110-2"	0.522	0.06150	11.59	20
1003105	COLLARIN TOMA SIMPLE 110-2 1/2	0.594	0.06150	13.04	20
1003119	COLLARIN TOMA SIMPLE 125-1/2"	0.574	0.06150	17.01	28
1003033	COLLARIN TOMA SIMPLE 125-3/4"	0.598	0.06150	17.70	28
1003034	COLLARIN TOMA SIMPLE 125-1"	0.581	0.06150	17.21	28
1003035	COLLARIN TOMA SIMPLE 125-1 1/4	0.588	0.06150	17.41	28
1003036	COLLARIN TOMA SIMPLE 125-1 1/2	0.597	0.06150	17.66	28
1003037	COLLARIN TOMA SIMPLE 125-2"	0.602	0.06150	17.82	28
1003107	COLLARIN TOMA SIMPLE 125-2 1/2	0.673	0.06150	17.76	25





ITEM 126 | Collarín toma simple 4 tornillos

Código	f tubo - C	Peso (g)	A	B	D	PN	TIPO ROSCA
03143	50 - 1 1/4"	289	70	99	23	PN16	BSP
03011	63 - 1/2"	237	70	94	16	PN16	BSP
03012	63 - 3/4"	236	70	94	17	PN16	BSP
03013	63 - 1"	244	70	99	21	PN16	BSP
03014	63 - 1 1/4"	250	70	99	23	PN16	BSP
03015	63 - 1 1/2"	262	70	99	31	PN16	BSP
03016	75 - 1/2"	317	85	112	16	PN10	BSP
03017	75 - 3/4"	309	85	112	17	PN10	BSP
03018	75 - 1"	315	85	112	21	PN10	BSP
03019	75 - 1 1/4"	329	85	114	23	PN10	BSP



ITEM 126 | Collarín toma simple 4 tornillos

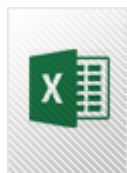
03020	75 - 1 1/2"	331	85	114	31	PN10	BSP
03021	75 - 2"	366	85	118	38	PN10	BSP
03022	90 - 1/2"	340	87	121	16	PN10	BSP
03023	90 - 3/4"	345	87	124	17	PN10	BSP
03024	90 - 1"	351	87	127	21	PN10	BSP
03025	90 - 1 1/4"	363	87	129	23	PN10	BSP
03026	90 - 1 1/2"	369	87	129	31	PN10	BSP
03027	90 - 2"	399	87	122	38	PN10	BSP
03115	110 - 1/2"	470	104	147	16	PN10	BSP
03028	110 - 3/4"	463	104	147	17	PN10	BSP
03029	110 - 1"	480	104	150	21	PN10	BSP
03030	110 - 1 1/4"	486	104	155	23	PN10	BSP
03031	110 - 1 1/2"	496	104	155	31	PN10	BSP
03032	110 - 2"	528	104	156	38	PN10	BSP
03105	110 - 2 1/2"	598	104	163	44	PN10	BSP
03119	125 - 1/2"	590	101	166	16	PN10	BSP
03033	125 - 3/4"	557	101	166	17	PN10	BSP
03034	125 - 1"	578	101	168	21	PN10	BSP
03035	125 - 1 1/4"	581	101	172	23	PN10	BSP
03036	125 - 1 1/2"	592	101	172	31	PN10	BSP
03037	125 - 2"	599	101	175	38	PN10	BSP
03107	125 - 2 1/2"	670	101	185	44	PN10	BSP



DOCUMENTACIÓN DE PRODUCTO



FAMILIA
TÉCNICA



CERTIFICADOS DE PRODUCTO

CERTIFICADOS DE EMPRESA

